



**With the Transfer IQ® care collaboration platform, you can:**

- Standardize workflows of incoming and outgoing patient transfers to the next phase of care.
- Increase transfer center volume across affiliated and non-affiliated facilities that will elevate your system’s financial, operational, and clinical performance.
- Gain deeper insight of patient transfers for referring hospitals and physicians, allowing the health system to grow in-network referrals to nearby, affiliated facilities.
- Unite referring and receiving providers with an automated, closed-loop process.

# Transfer IQ®

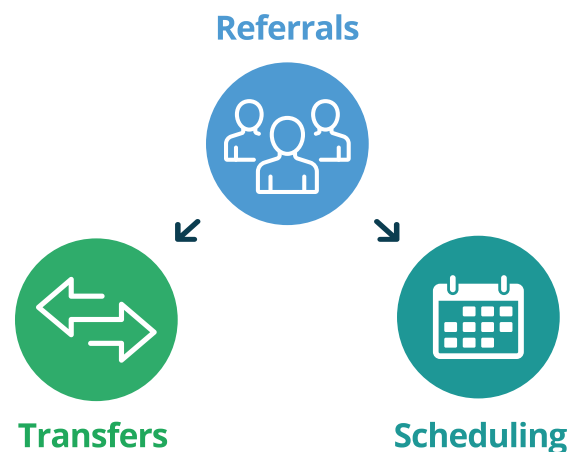
Transfers are a major source of patients for a health system, and Transfer Center organizational success is the key driver of reducing patient leakage. Transfer IQ serves as the centralized hub for patient transfers providing a unified platform that streamlines patient transfer and transport processes, connects staff to essential transfer-related resources, drives better compliance and patient acquisition, and provides the critical data needed for capacity visibility at the unit, facility, and system level.

**65%** of health systems say patient leakage blocks them from reaching their financial goals.

## Care Access

### Take control of medical transportation

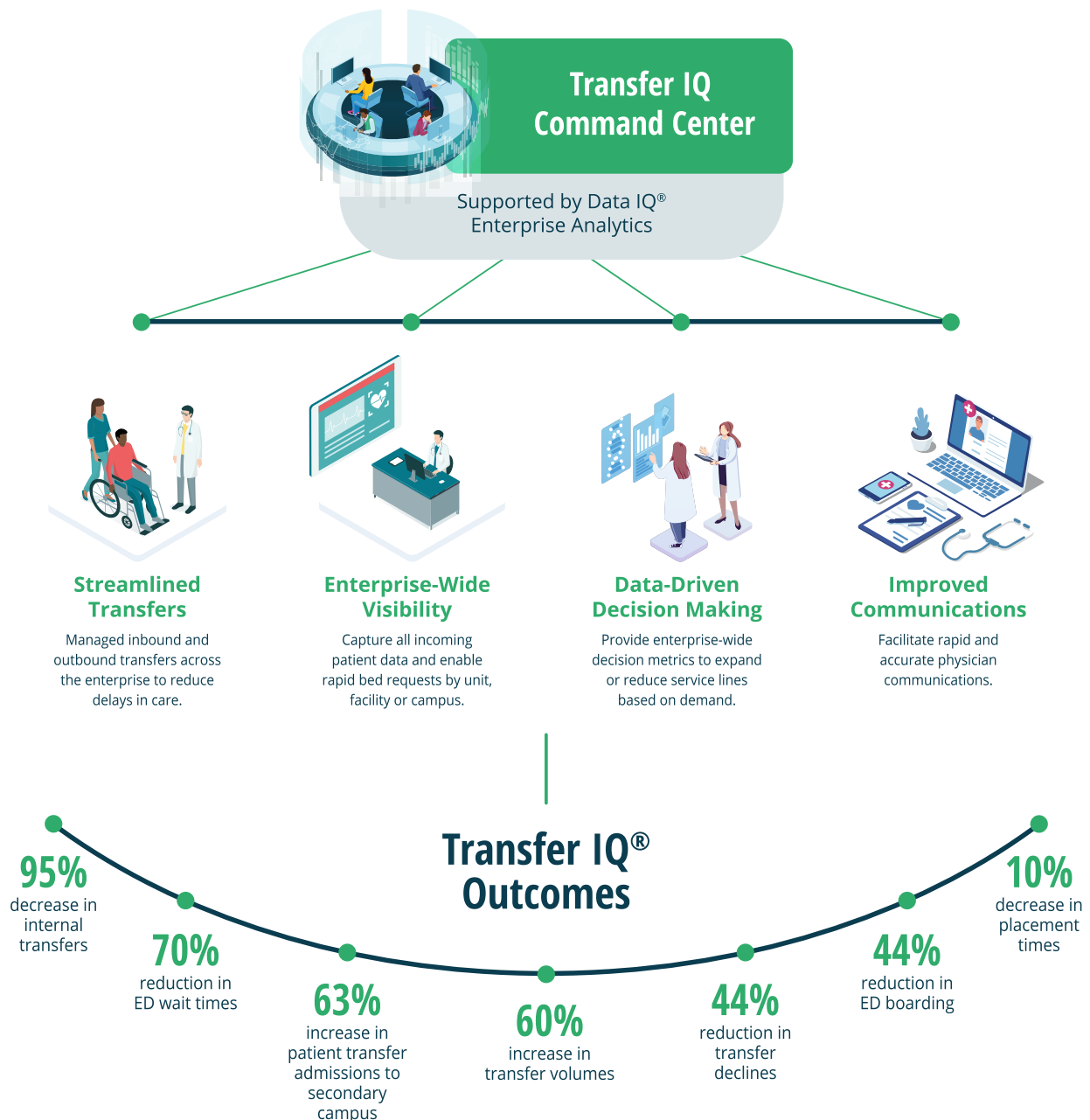
- Decrease patient wait times
- Reduce staff time spent on non-emergent transports
- Automate a transportation request to transportation providers through the Transfer IQ platform
- Speed of patient care with better healthcare outcomes



## Can You 'See' Your Transfer Center Operations?

Without automation and support with data analytics technology, you'll never have a clear view into how efficiently your health system's Transfer Center is performing. Those blind spots can cause you to miss significant transfer patient revenue opportunities for your health system.

Transfer IQ addresses those blind spots and helps your health system achieve efficiency outcomes you never thought were possible.



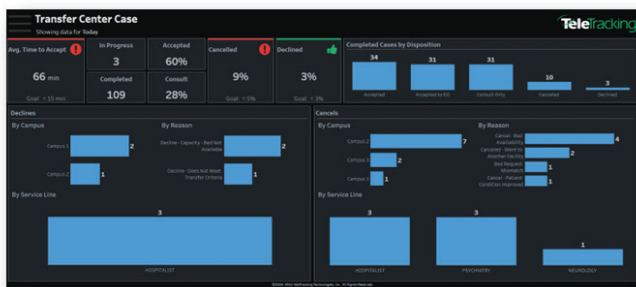
## Powerful Insights with Enterprise Analytics Integration

Transfer IQ offers the advantage of seamless integration with Data IQ® Enterprise Analytics. This integration provides easy-to-use reports and access to a wealth of data points, including standard dashboards, the ability to build customized dashboards and direct access to the data if there is a need to integrate with other systems. These powerful insights empower healthcare organizations to gain true system-wide situational awareness of transfer center operational performance, and incoming and outgoing transfer center process efficiencies, enabling data-driven decision-making, continuous improvement, and better resource allocation.

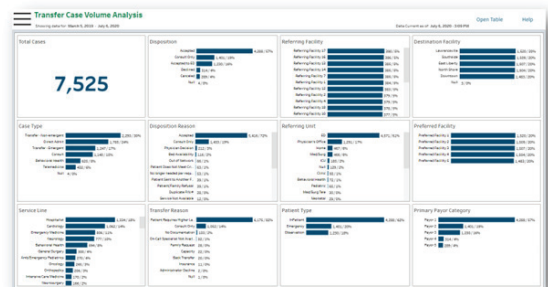
## Standardized Content

Increasing transfer center volume is key, but it's not the entire story. To truly utilize a centralized transfer center model, it will require having insight of capability, capacity, patient request, and payor factors in addition to patient referral volume. A library of ready-to-use dashboards are available and used for these key factors.

### Reduce communication gaps with referral management

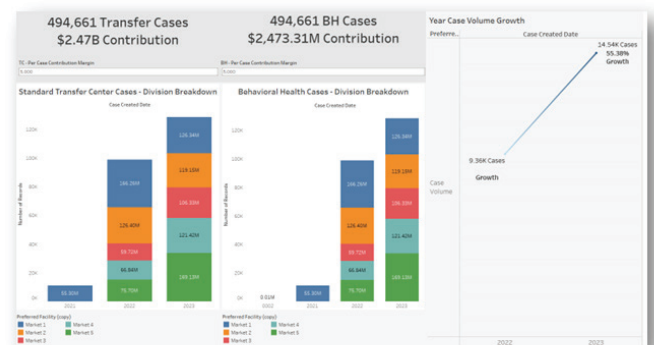


### Transfer Case Volume Analysis



## Customized Reports

In addition to our set of standard content, Data IQ Enterprise Analytics offers powerful data visualization tools that can be used by your analysts to modify any standard reports/dashboards. They can also be used to create entirely original dashboards.



## Direct Access to Data

With the added feature of Data IQ® Warehouse Connector advanced analytics teams can extract data from Transfer IQ without going through the standard front-end tool. Directly accessing operational data into your existing Enterprise Data Warehouse allows you to combine this data with other key staffing, financial and clinical data providing more visibility across the entire organization leading.

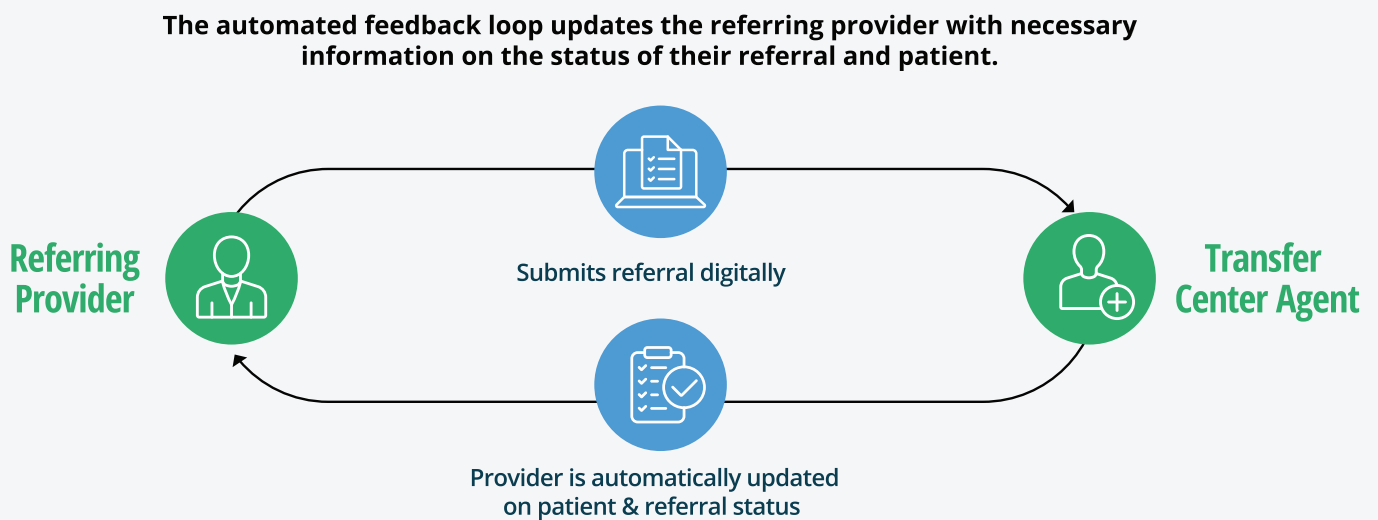
## Improve Operational Efficiency and Increase Referrals

Inpatient Referrals are a major source of patients for the health system and facilities. By leveraging Transfer IQ, health systems can enhance their operational efficiency with a platform that streamlines referral processes, reduces administrative burdens, and optimizes resource allocation with Referral IQ®. This efficiency translates into increased physician referrals, as the system becomes more attractive to referring physicians seeking seamless and reliable patient transfers. Additionally, the platform's automation capabilities save valuable time for staff, enabling them to focus on providing quality care.

## Reduce Communication Gaps and Maximize Referral Management Processes

Unite referring and receiving providers with an automated closed-loop process so providers are not waiting for key referral tracking on their patients. Feedback is provided automatically, and in real-time, so clinicians are more effective in improving patient outcomes.

- Get automated feedback for referring providers
- Help to get patients to the right place at the right time via the transfer center
- Produce reports on referrals and benchmark organization metrics
- Manage affiliated and non-affiliated referring provider users and accounts



TeleTracking is an integrated healthcare operations platform that is expanding the capacity to care by combining comprehensive technology solutions with clinical expertise to optimize access to care, streamline care delivery and connect transitions of care. We understand that for every hour a patient waits for care they face objectively worse outcomes; so our mission is simple, to ensure that no one waits for the care they need.