



With a Boundaryless™ Operational Network you can:

- Create operational interoperability and shared visibility to owned, affiliated and nonaffiliated care settings
- Influence data-driven process improvement through shared, real-time analytics and simplified communication
- Understand where your patients are coming from and where they are going, resulting in improved load balancing and increased market share

Boundaryless™ Healthcare

Expanding the Capacity to Care™ Beyond the Four Walls of the Health System

Now more than ever, Health Systems face historic staffing shortages, capacity constraints and unsustainable financial pressures that are forcing leaders to find new ways of improving operational management, automation and collaboration. This means thinking not just about the patient's acute care stay and the bed they occupy, but how they interact with the system throughout their entire care journey.

Leveraging TeleTracking's integrated operations platform and Boundaryless Healthcare, you can to work more collaboratively with owned, affiliated and non-affiliated facilities by creating shared visibility to capacity, referral patterns, and patient demand. TeleTracking is helping to connect previously disconnected care settings by capturing and operationalizing data to automate workflows and promote:



Selective Interoperability

Developing shared visibility with regional partners



Accelerated Access

Standardizing admission requests from all providers



Virtual Operations

Managing patients treated outside the Health System

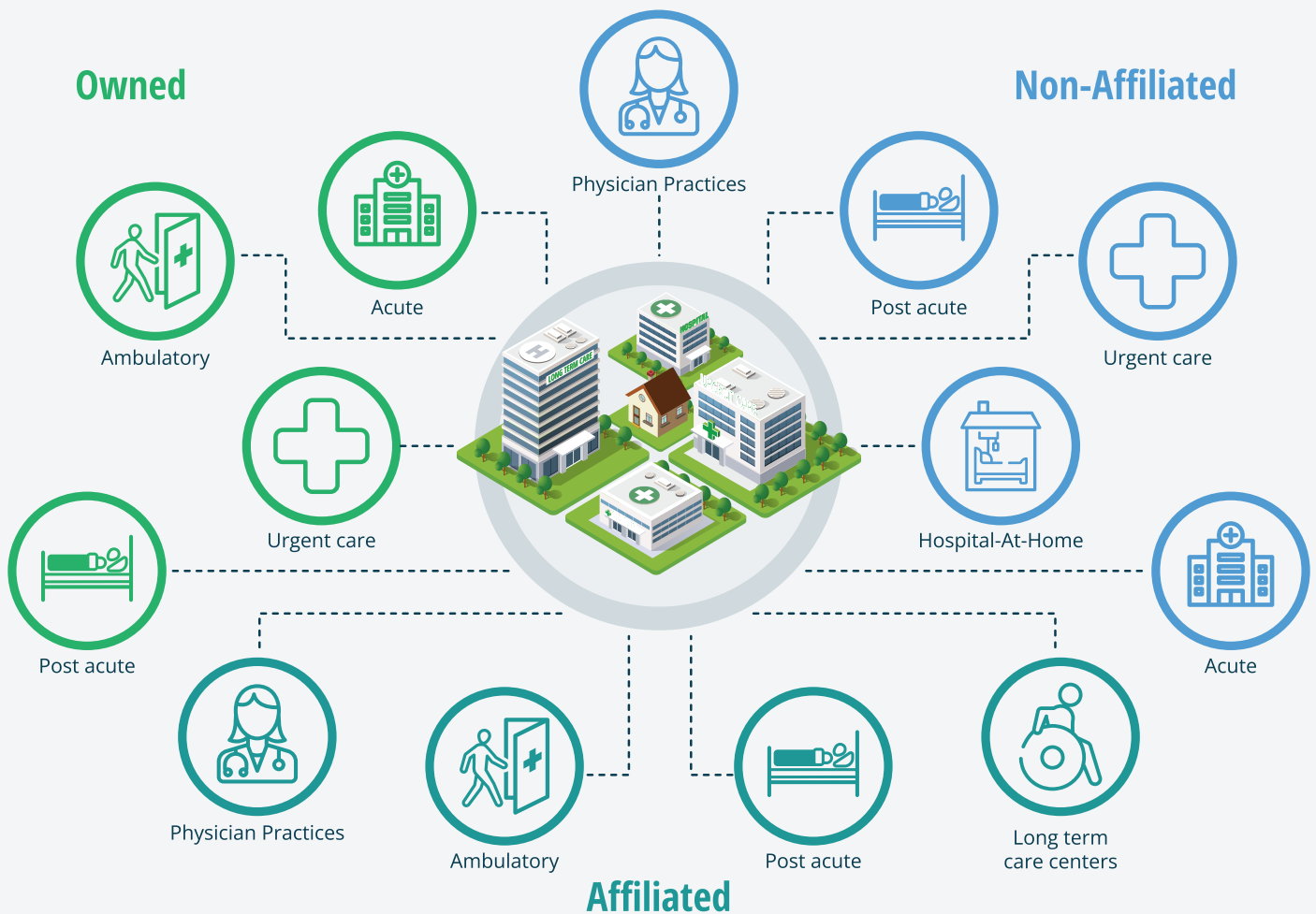


Automated Workflows

Integrating technology to reduce staff touchpoints

Improve Access & Quality of Care Without Overburdening Staff

- Provide rural hospitals with the referral tools and visibility they need to get patients to right care setting faster and more efficiently.
- Enable 'Hospital-at-Home' visibility to keep patients where they're most comfortable while maintaining regulatory compliance.
- Create virtual beds/units that allow you to expand capacity to outlying facilities while caring for patients not occupying a physical bed.
- Develop new collaboration opportunities with community facilities and load-balance patients across the network.

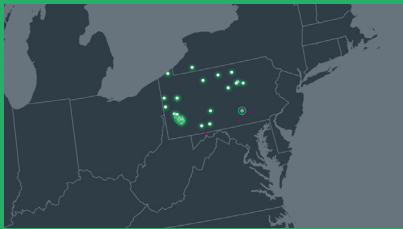


The Evolution of Operational Interoperability™

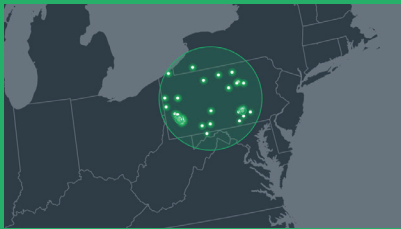
With the shift from individual, independent hospitals to Health Systems came the demand for system-wide visibility to capacity, centralized placement capabilities, and the need for better data, analytics and benchmarking. Now, as we move to True Market Networks, the need for that visibility and data to scale across disparate Health Information Systems, especially EHRs, is paramount.

Having Operational Interoperability across owned, affiliated, and non-affiliated care entities alike, including acute, ambulatory, specialty, free standing EDs, post-acute, home health, hospital at home and more, means expanding partnerships and relational growth opportunities to extend you clinical expertise throughout the community, creating a true healthcare ecosystem.

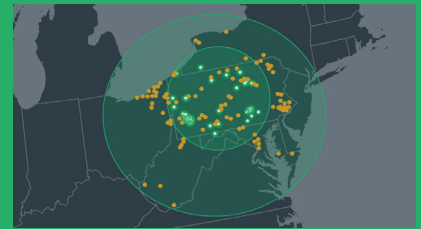
Hospital



Health System



True Market Network



The Role of Integrated Operational Platforms in Healthcare

TeleTracking's consultative services and operational platform provides system-wide situational awareness of operations, staffing workflows and available resources within and across a Health System. With analytics built to combine meaningful operational data with data from other systems like EHRs and HIS', TeleTracking's platform gives your Health System the full visibility needed to align operations to staffing workflows that best meet the needs of the patient's journey. The platform enables automated clinical and operational workflows and patient flow management so your organization can achieve your strategic priorities and deliver the highest quality of care.

TeleTracking's platform is built from scalable solutions designed to work seamlessly with your organization's systems to bridge the information and visibility gaps between and across care sites, care teams, and EHRs. The result is integrated, system-wide operations that improves the efficiency and effectiveness in care access, care delivery and transitions of care.

TeleTracking is an integrated healthcare operations platform that is Expanding the Capacity to Care™ by combining comprehensive technology solutions with clinical expertise to optimize access to care, streamline care delivery and connect transitions of care. We understand that for every hour a patient waits for care they face objectively worse outcomes; so our mission is simple, to ensure that no one waits for the care they need.